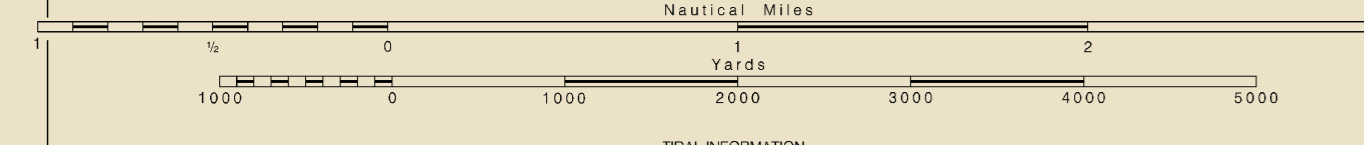


SUISUN BAY

United States
California - West Coast
Mercator Projection
Scale 1:40,000 at Lat. 38°07'
North American Datum of 1983
(World Geodetic System of 1984)

SOUNDINGS IN FEET
AT MEAN LOWER LOW WATER
Additional information can be obtained at nauticalcharts.noaa.gov



NAME	PLACES	HEIGHT (feet)	HEIGHT (meters)
Suisun City	08°14'N 122°07'W	502	153
Benicia	08°07'N 122°09'W	339	103
Benicia	08°02'N 122°09'W	53	16
Chico	08°04'N 122°07'W	59	18
Suisun Slough Entrance	08°07'N 122°09'W	47	14
Hickman Slough Bridge	08°11'N 122°07'W	43	13

TECHNICAL INFORMATION

Vertical datum is based on a datum of sounding (MLLW). Mean high water, mean low water, mean lower low water, and other datum information are available at <http://hydrographic.noaa.gov>.

ABBREVIATIONS (For abbreviations of symbols and soundings, see Chart No. 1.)

Chart Symbols

Symbol	Meaning	Symbol	Meaning
(Symbol)	Shoal	(Symbol)	Shoal
(Symbol)	Shoal	(Symbol)	Shoal

ADDITIONAL INFORMATION

Consult U.S. Coast Guard Light List for supplemental information concerning aids to navigation.

NOAA WEATHER RADIO BROADCASTS

The NOAA Weather Radio stations listed below provide continuous weather broadcasts. The reception range is typically 20 to 40 nautical miles from the antenna site, but can be as much as 100 nautical miles for stations at high elevations.

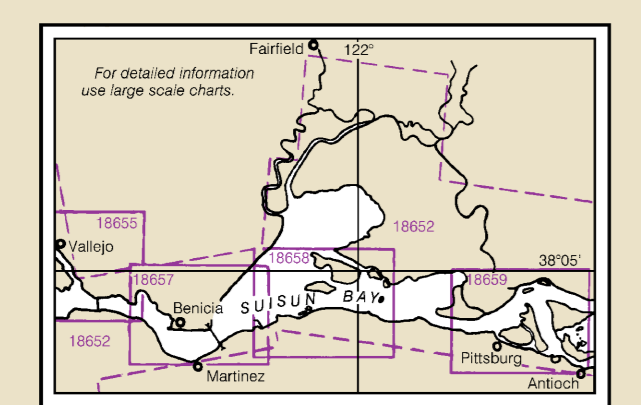
Station: WPTX 162.550 MHz WXZ
Station: WPTX 162.550 MHz WXZ

CAUTION

Improved channels allow by broken lines are subject to changing, particularly at the edges.

CAUTION

Temporary changes or defects in aids to navigation are not indicated on this chart. See Local Notice to Mariners.



NOTE B: The area within one hundred yards of the southern end of Mare Island and within 50 yards of any part of that landing pier at the Navy Yard including pier 35 at the south end of Mare Island is a Prohibited Area 33A (100 Yards No-Go Area).

HORIZONTAL DATUM

The horizontal reference datum of this chart is North American Datum of 1983 (NAD 83), which for charting purposes is considered equivalent to the World Geodetic System 1984 (WGS 84). Geographic coordinates referred to the North American Datum of 1983 must be corrected an average of 0.20' westward and 0.37' westward to agree with this chart.

NOTE A

Navigation regulations published in Chapter 2, U.S. Coast Pilot 7. Additions or revisions to Chapter 2, U.S. Coast Pilot 7 are published in the Notice to Mariners. Information concerning the regulations may be obtained at the Office of the Commander, 11th Coast Guard District in Alameda, California or at the Office of the District Engineer, Corps of Engineers in San Francisco, California. Refer to charted regulation section numbers.

NOTE C

The U.S. Coast Guard operates a mandatory Vessel Traffic Services (VTS) system in the San Francisco Bay and surrounding areas. Vessel operating procedures and designated transponder requirements are contained in 33 CFR 161. The U.S. Coast Pilot, under the VTS Manual. The chart of this system is shown in the lower left corner of this chart.

NOTE D

The clearance of the lift span is 70 feet above mean higher high water when down and 130 feet when raised. Horizontal clearance 291 feet.

Fixed red lights are shown to mark the piers supporting the spans that adjust the lift spans. A fixed green light is shown to mark the middle of each of those spans. Flashing red lights are shown from the top of the middle of those spans and from the top of the northern lift tower.

UNION PACIFIC BRIDGE

The clearance of the lift span is 70 feet above mean higher high water when down and 130 feet when raised. Horizontal clearance 291 feet.

Fixed red lights are shown to mark the piers supporting the spans that adjust the lift spans. A fixed green light is shown to mark the middle of each of those spans. Flashing red lights are shown from the top of the middle of those spans and from the top of the northern lift tower.

CAUTION

This chart has been corrected from the Notice to Mariners (NM) published weekly by the National Oceanic and Atmospheric Administration and the Local Notice to Mariners (LNM) issued periodically by each U.S. Coast Guard District to the data shown in the lower left hand corner. Chart updates corrected from Notice to Mariners publications that appear above the lower left hand corner are available at nauticalcharts.noaa.gov

RADAR REFLECTORS

Radar reflectors have been placed on many floating aids to navigation. Individual radar reflector identification on these aids has been omitted from this chart.

AIDS TO NAVIGATION

Consult U.S. Coast Guard Light List for supplemental information concerning aids to navigation.

NOAA WEATHER RADIO BROADCASTS

The NOAA Weather Radio stations listed below provide continuous weather broadcasts. The reception range is typically 20 to 40 nautical miles from the antenna site, but can be as much as 100 nautical miles for stations at high elevations.

ADDITIONAL INFORMATION

Consult U.S. Coast Pilot 7 for important supplemental information.

WARNING

The prudent mariner will not rely solely on any single aid to navigation, particularly on floating aids. See U.S. Coast Guard Light List and U.S. Coast Pilot for details.

NOTE

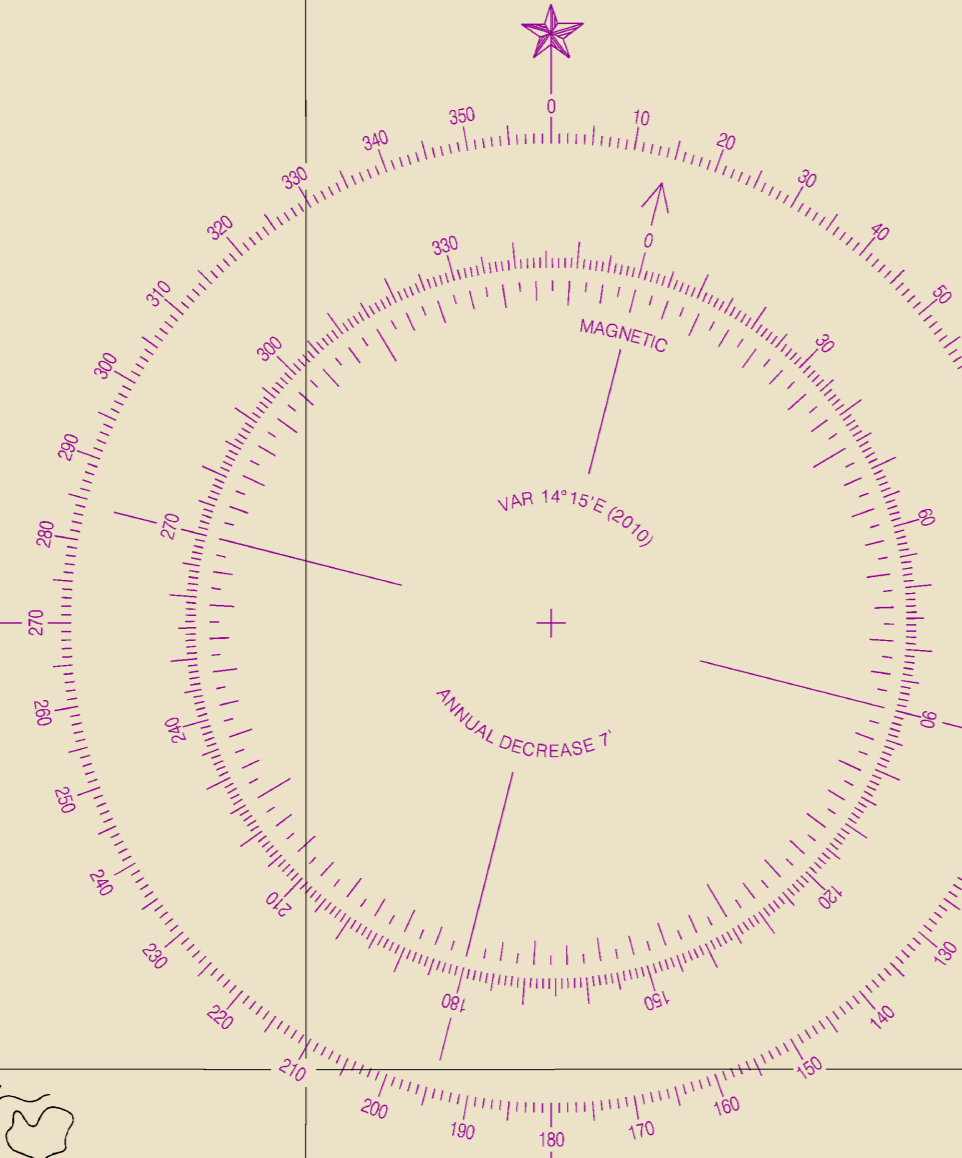
NOAA encourages users to submit inquiries, discrepancies or comments about this chart at <http://www.nauticalcharts.noaa.gov/contact.htm>

CAUTION

Improved channels allow by broken lines are subject to changing, particularly at the edges.

CAUTION

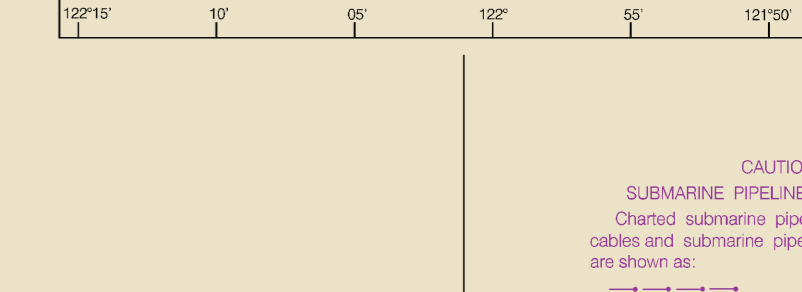
Temporary changes or defects in aids to navigation are not indicated on this chart. See Local Notice to Mariners.



SOURCE DIAGRAM

The outlined areas represent the limits of the most recent hydrographic survey information that has been evaluated for charting. Surveys have been tabulated in this diagram by date and type of survey. Channels maintained by the U.S. Army Corps of Engineers are periodically resurveyed and are not shown on this diagram. Refer to Chapter 1, United States Coast Pilot.

Symbol	Survey	Source
A	1980-1981	NOS Surveys
B1	1980-1981	NOS Surveys
B2	1970-1980	NOS Surveys
B3	Pre-1960	NOS Surveys



CAUTION

Submarine pipelines and cables. Charted submarine pipelines and submarine cables and submarine pipelines and cables are shown as follows:

Submarine Pipeline: (Symbol)

Submarine Cable: (Symbol)

Additional uncharted submarine pipelines and submarine cables may exist within the area of this chart. Not all submarine pipelines and submarine cables are required to be marked, and those that are not marked may have become exposed. Mariners should use extreme caution when conducting operations in depths of water compatible to their draft in areas where pipelines and cables may exist, and when anchoring, dragging, or towing. Corrosive leaks may be marked by lights or unlighted buoys.

TABULATED FROM SURVEYS BY THE CORPS OF ENGINEERS - SURVEYS TO OCT 2017

NAME OF CHANNEL	DATE OF SURVEY	DEPTH (FEET)	DEPTH (METERS)
SUISUN PI. REACH	4-22-18	10.0	3.0
DEEP WATER SHIP CHANNEL	2-10-18	30.0	9.1
PI. EDEN CHANNEL RANGE	3-15-18	30.0	9.1
WEST BAY CHANNEL	2-10-18	30.0	9.1
PI. EDEN CHANNEL RANGE	3-15-18	30.0	9.1
WEST BAY CHANNEL	2-10-18	30.0	9.1
PI. EDEN CHANNEL RANGE	3-15-18	30.0	9.1
WEST BAY CHANNEL	2-10-18	30.0	9.1
PI. EDEN CHANNEL RANGE	3-15-18	30.0	9.1
WEST BAY CHANNEL	2-10-18	30.0	9.1
PI. EDEN CHANNEL RANGE	3-15-18	30.0	9.1
WEST BAY CHANNEL	2-10-18	30.0	9.1
PI. EDEN CHANNEL RANGE	3-15-18	30.0	9.1
WEST BAY CHANNEL	2-10-18	30.0	9.1

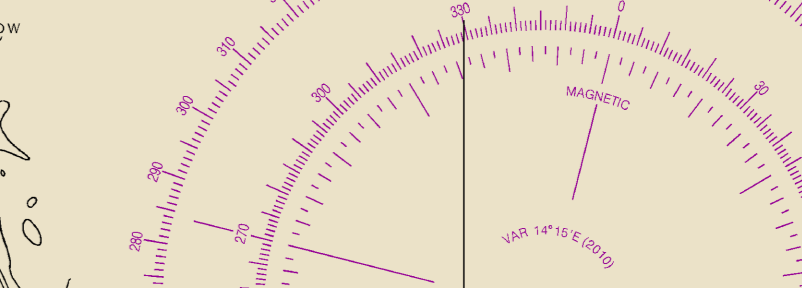
POLLUTION REPORTS

Report all spills of oil and hazardous substances to the National Response Center via 1-800-424-8802 (24 hr) or to the nearest U.S. Coast Guard Sector if response communication is impossible (33 CFR 153).

NOTE D

CAUTION

Mariners are warned that numerous uncharted pipes, traps, pumps, and pipes, some submerged, may exist along the edges of the waterway.



CAUTION

Limitations on the use of radio signals as aids to marine navigation can be found in the U.S. Coast Guard Light List and National Oceanic and Atmospheric Administration Publication 117. Radio-directional beacons to commercial broadcasting stations are subject to error and should be used with caution. Station positions are shown thus:

(Symbol) (Location) (Approximate location)

CAUTION

Improvements in channels allow by broken lines are subject to changing, particularly at the edges.

CAUTION

Temporary changes or defects in aids to navigation are not indicated on this chart. See Local Notice to Mariners.

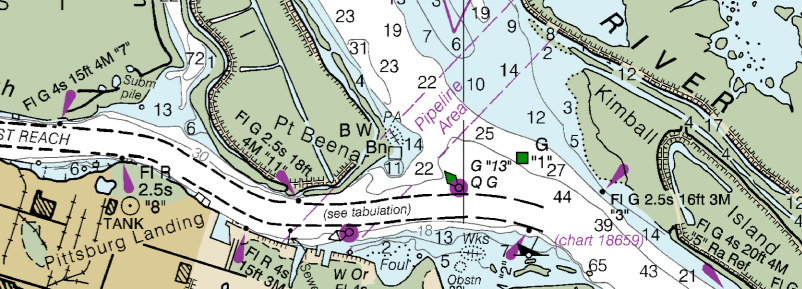
UNION PACIFIC BRIDGE

The clearance of the lift span is 70 feet above mean higher high water when down and 130 feet when raised. Horizontal clearance 291 feet.

Fixed red lights are shown to mark the piers supporting the spans that adjust the lift spans. A fixed green light is shown to mark the middle of each of those spans. Flashing red lights are shown from the top of the middle of those spans and from the top of the northern lift tower.

CAUTION

This chart has been corrected from the Notice to Mariners (NM) published weekly by the National Oceanic and Atmospheric Administration and the Local Notice to Mariners (LNM) issued periodically by each U.S. Coast Guard District to the data shown in the lower left hand corner. Chart updates corrected from Notice to Mariners publications that appear above the lower left hand corner are available at nauticalcharts.noaa.gov



Suisun Bay
SOUNDINGS IN FEET - SCALE 1:40,000

56th Ed., Aug. 2010. Last Correction: 6/19/2018. Cleared through: LNM: 2518 (6/19/2018), NM: 2618 (6/30/2018). This chart was distributed as a PDF (Portable Document Format). Printing PDFs may alter the chart scale, color, or legibility that may impact suitability for navigation. Printed charts provided by NOAA certified Print on Demand (POD) providers fulfill a vessel's requirement to carry a navigational chart published by the National Ocean Service in accordance with federal regulations, including but not limited to 33 C.F.R. 164.33(a), 33 C.F.R. 164.72(b), and 46 C.F.R. 28.225(a). POD charts meet stringent print standards and can be recognized by an official certification of authenticity printed on the chart. A list of POD providers can be found at: nauticalcharts.noaa.gov/pod